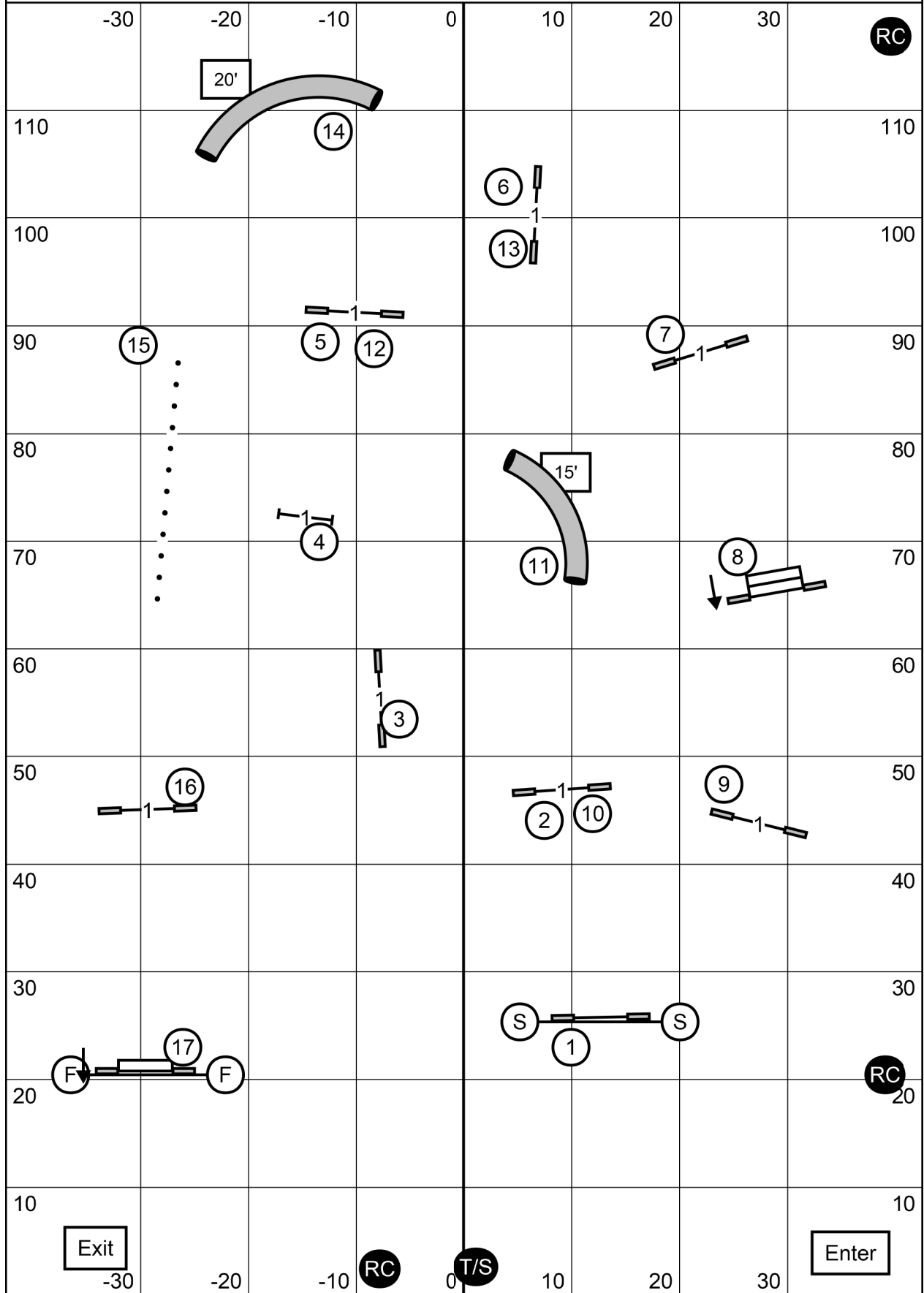
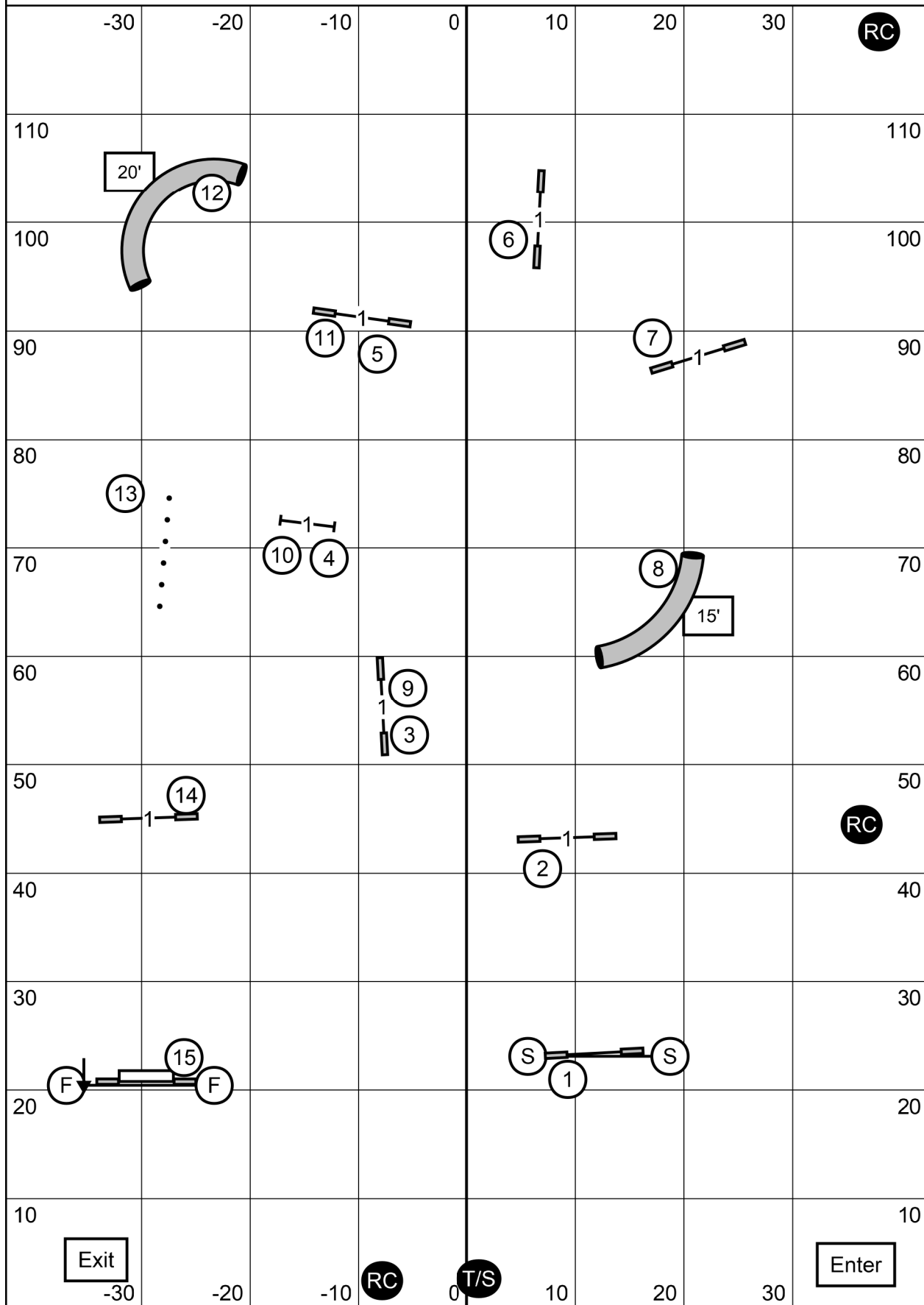


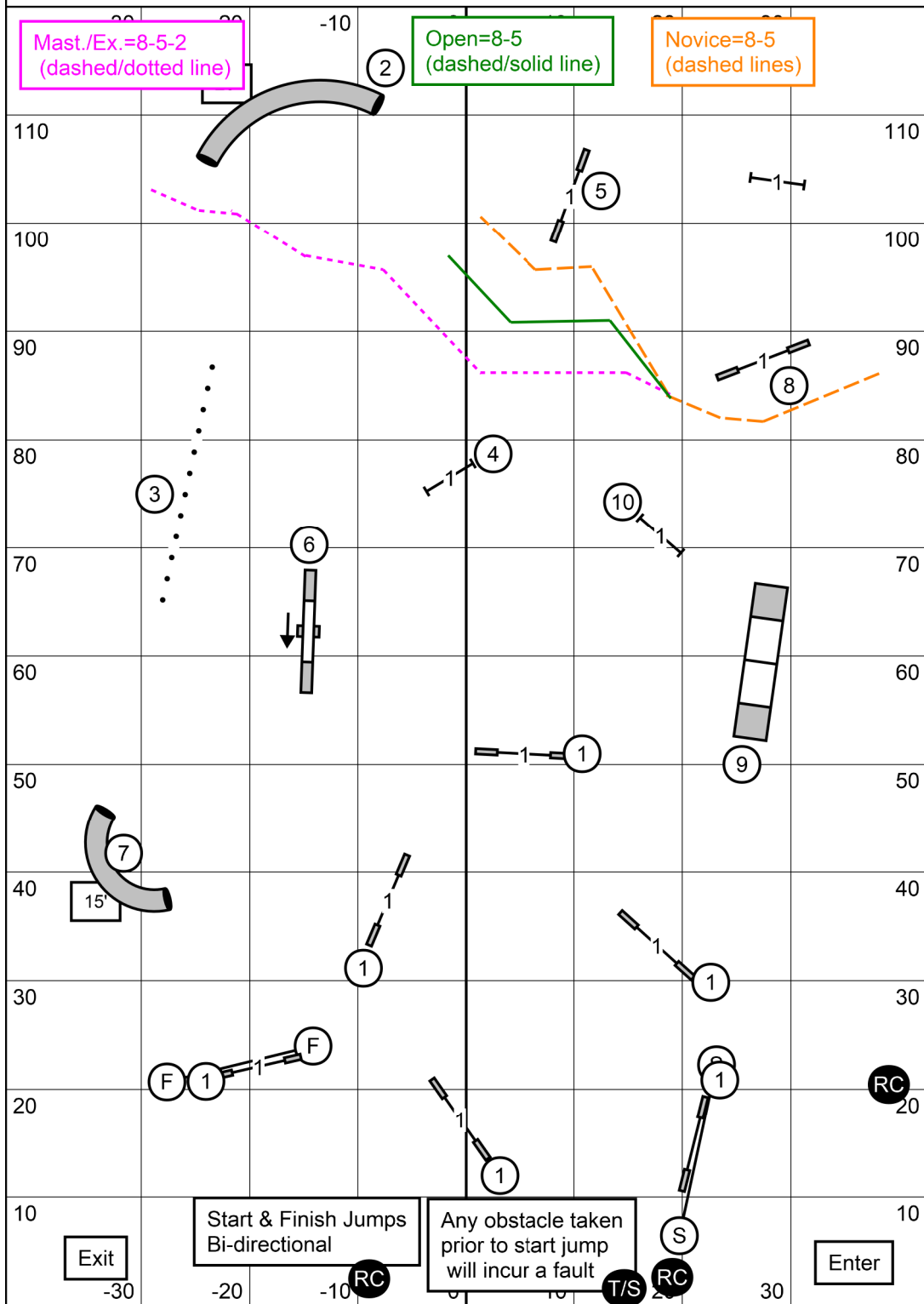
PLEASE ENTER WHEN THE DOG PRIOR TO YOU TAKES #16.



PLEASE ENTER WHEN THE DOG PRIOR TO YOU TAKES #13.

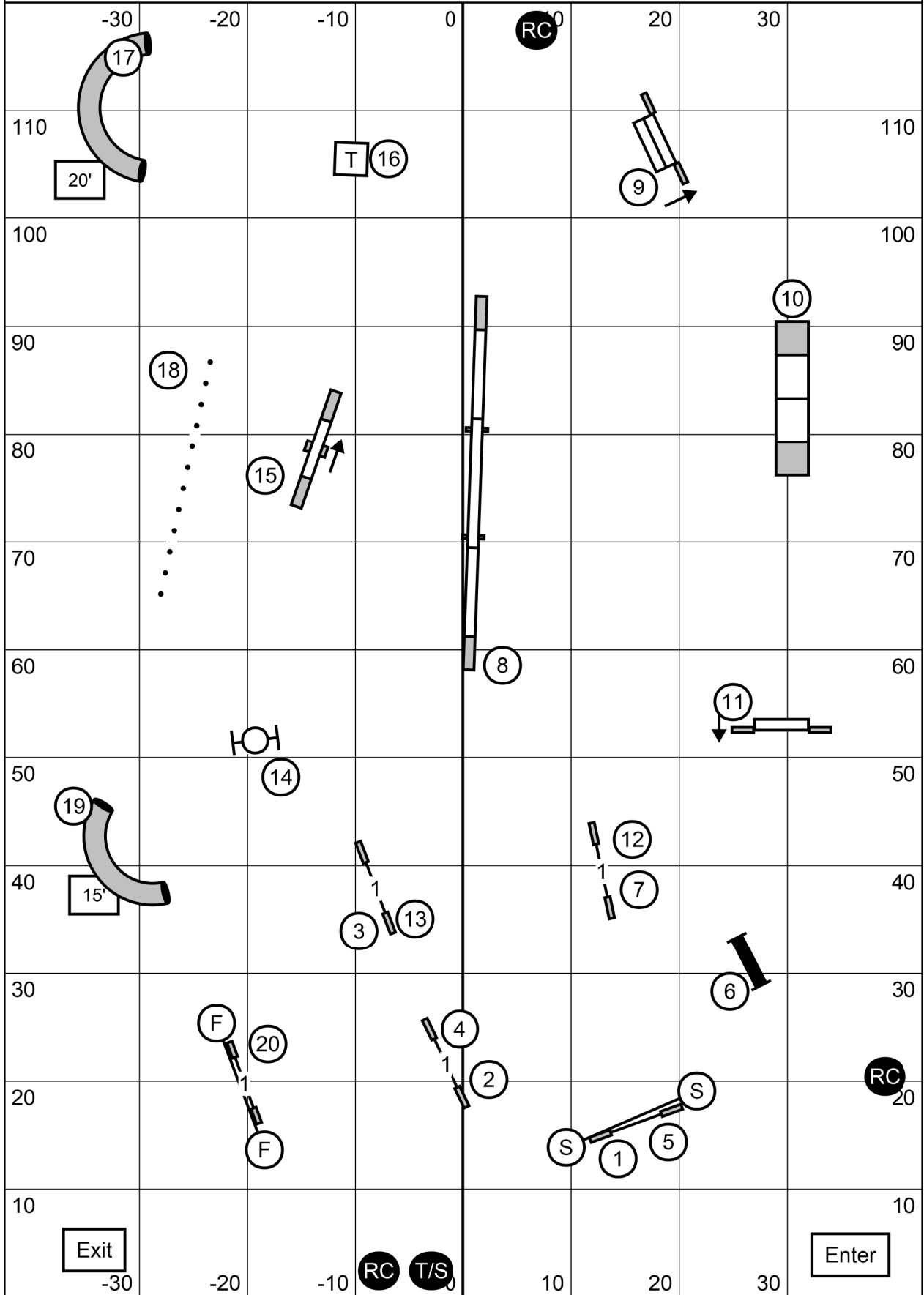


PLEASE ENTER WHEN THE DOG PRIOR TO YOU TAKES #12 tunnel.



Handler must be outside the line when all 4 paws leave ground for Jump #8, **until all 4 paws touch ground after last obstacle in send**. All 1 pt. jumps, including Start & Finish Jumps, Tunnel #7, Jumps #4 & #10, and Weaves #3, are bi-directional.

NO BACK TO BACK OBSTACLES FOR POINTS.
Excellent/Master Send Obstacles=15+20 pts. needs 60 pts. to Q, so accumulation pts. must be 25 or greater. **Open** Send=13+20 pts. needs 55 pts. so accumulation must be 22 or greater. **Novice** Send=13+20 pts. needs 50 pts. so accumulation must be 17 or greater.
 SCT all levels: 38sec.-8"; 35sec.-12/16"; 32sec.-20/24/26".
 Preferred: 41sec.-4"; 38sec.-8/12"; 35sec.-16/20".
PLEASE ENTER WHEN THE DOG PRIOR TO YOU TAKES FINISH JUMP.



Please enter when the dog prior to you is at #16 table.

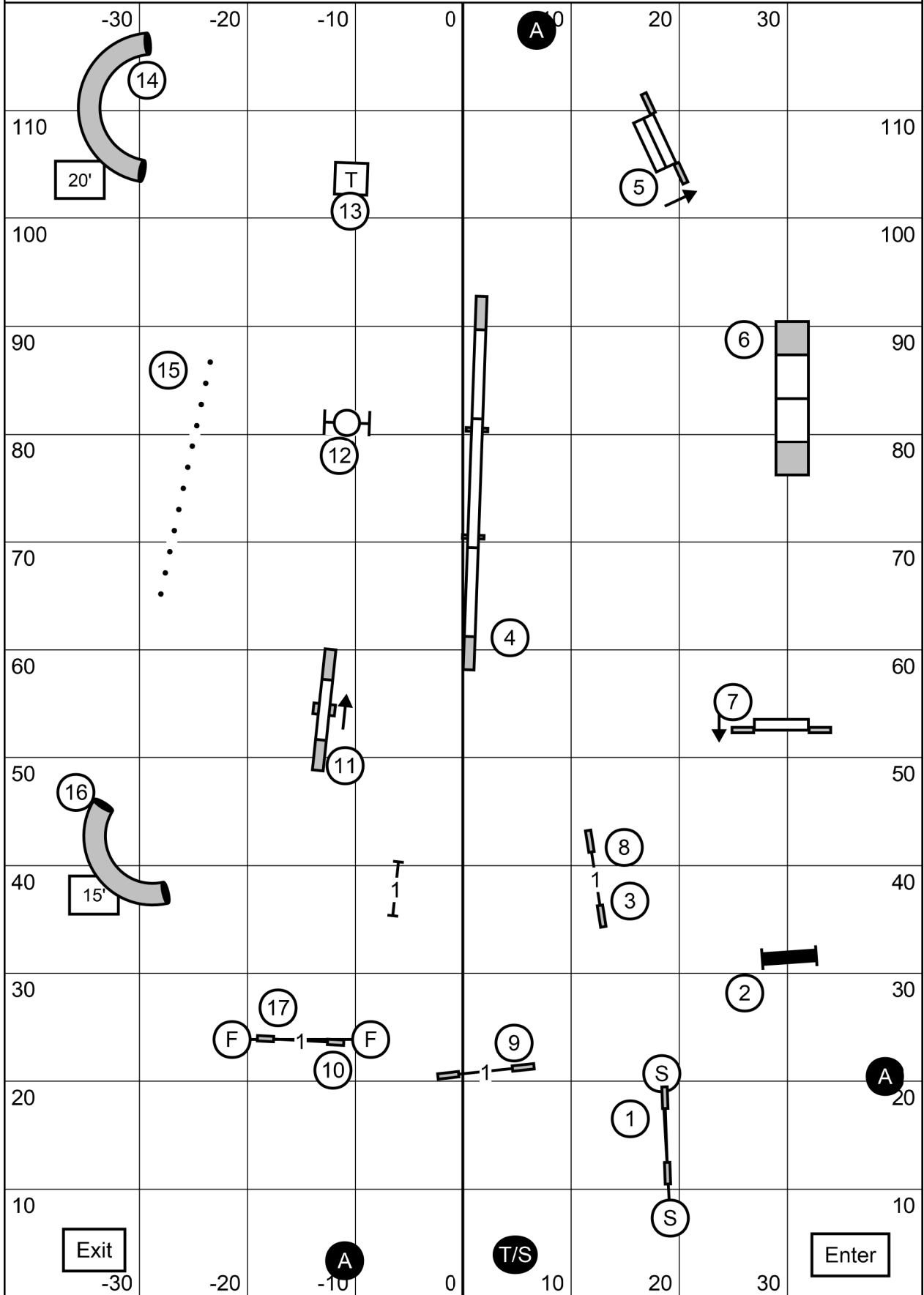
OPEN STANDARD

Saturday/August 28, 2021

Judge: Laura A English

Southern Adirondack Agility Club Indoors/Matting 85X120-High Goal Farm

Greenwich, NY



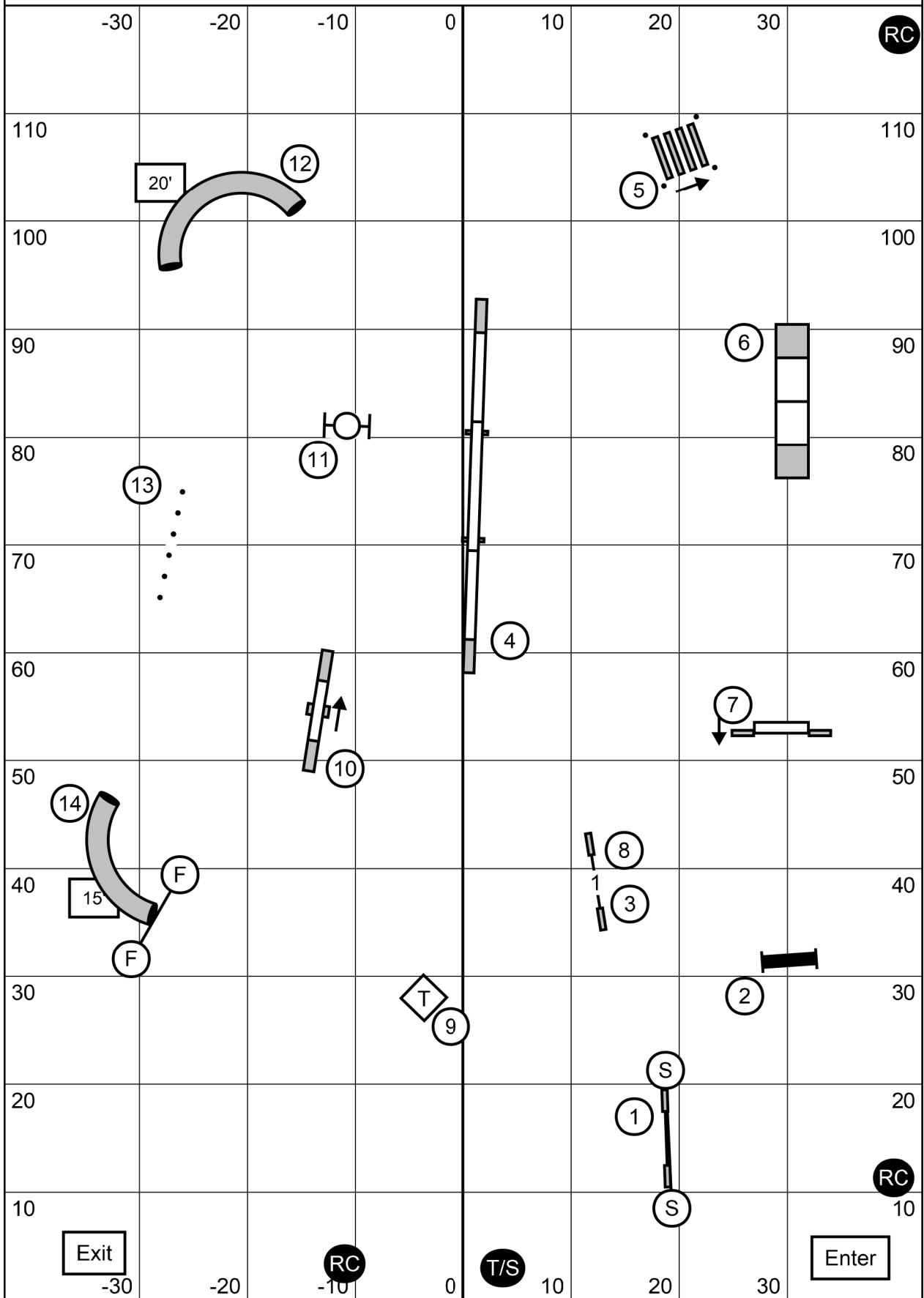
Please enter when the dog prior to you is at #12 table.

NOVICE STANDARD

Saturday/August 28, 2021

Judge: Laura A English

Southern Adirondack Agility Club Indoors/Matting 85X120-High Goal Farm Greenwich, NY



Please enter when the dog prior to you is at #12 tunnel.