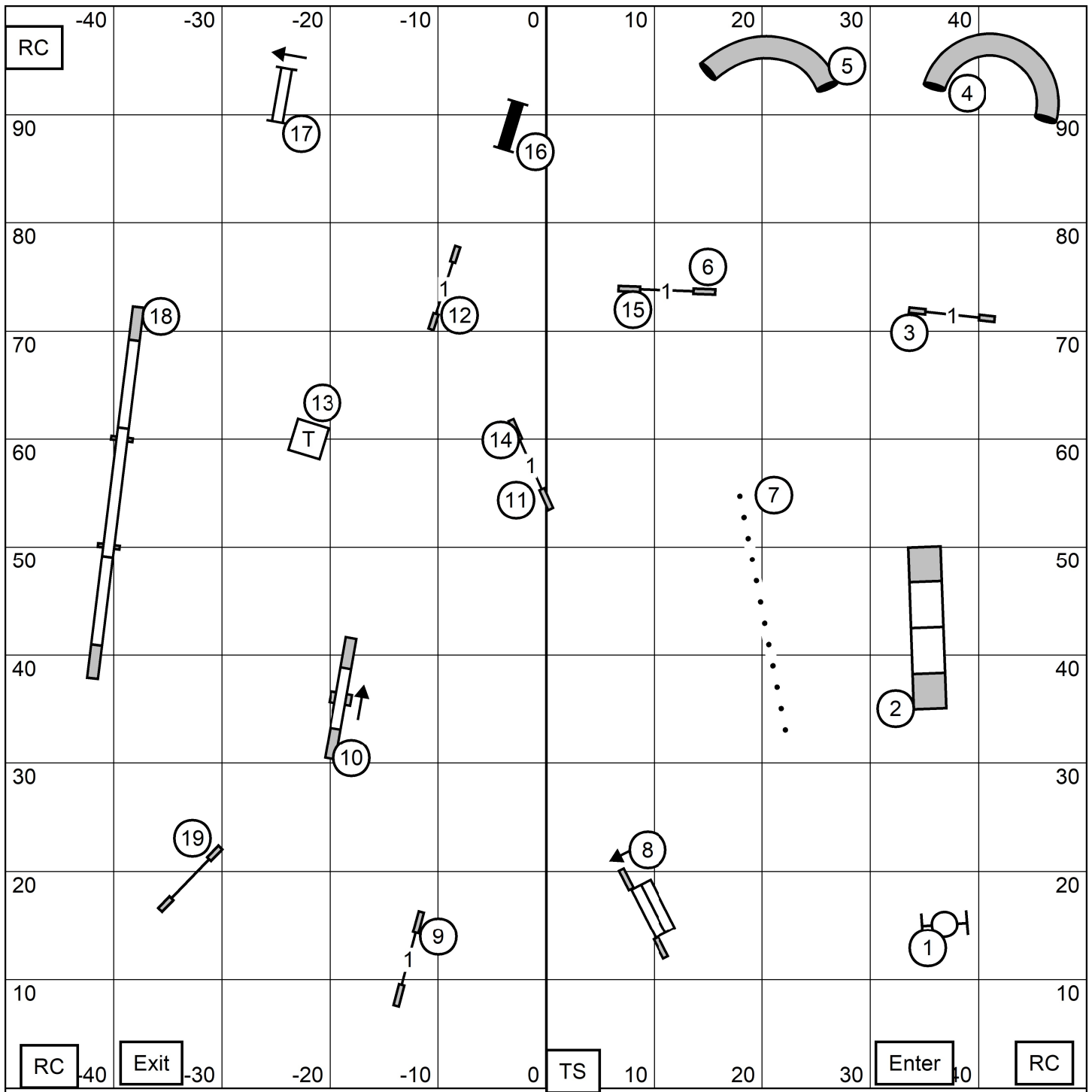
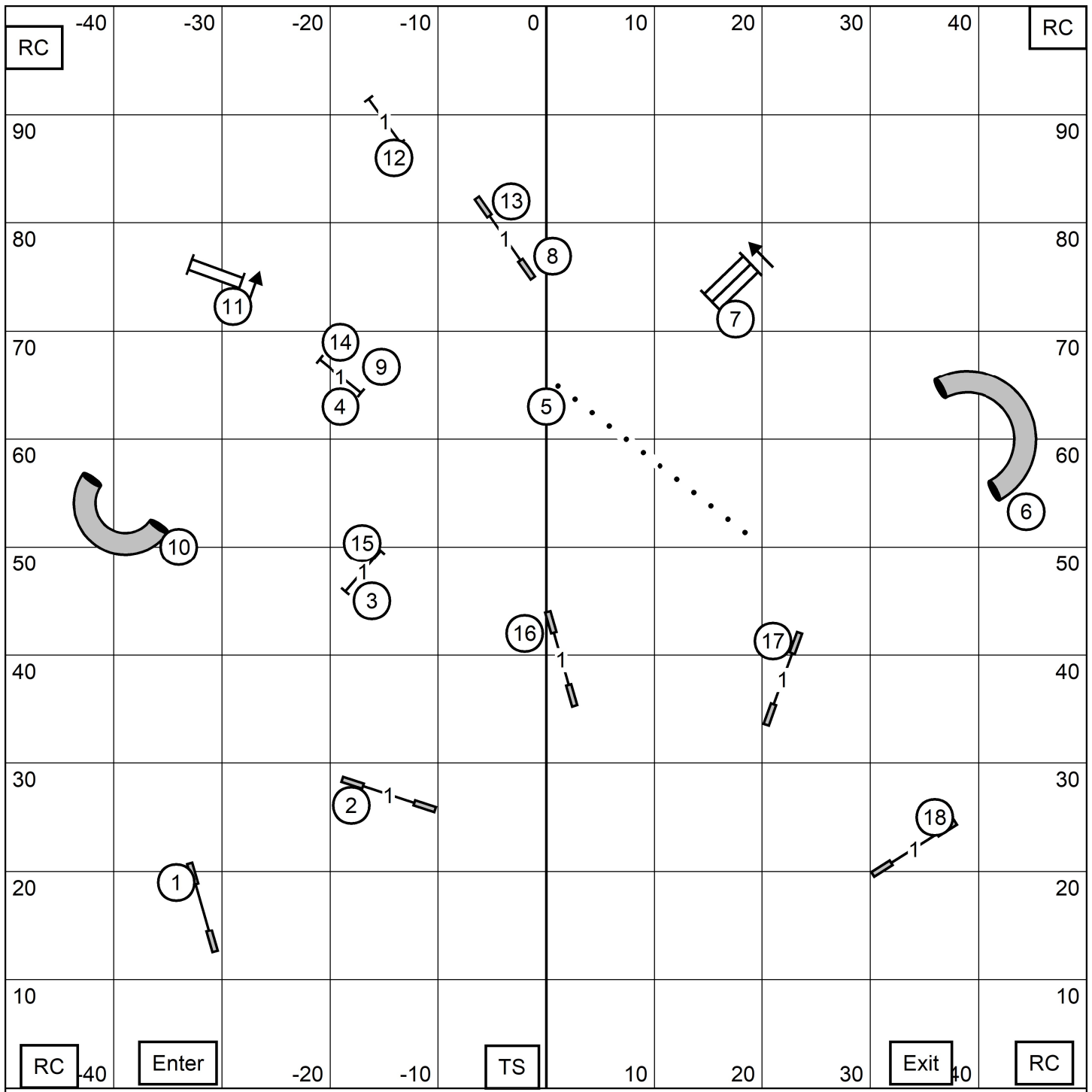


WESTERN MASSACHUSETTES SHETLAND SHEEPDOG CLUB  
**PREMIER STANDARD**  
 SATURDAY, OCTOBER 9, 2021  
 DIANE DUNN FYFE



WESTERN MASSACHUSETTES SHETLAND SHEPDOG CLUB  
**EXCELLENT MASTER STANDARD**  
 SATURDAY, OCTOBER 9, 2021  
 DIANE DUNN FYFE

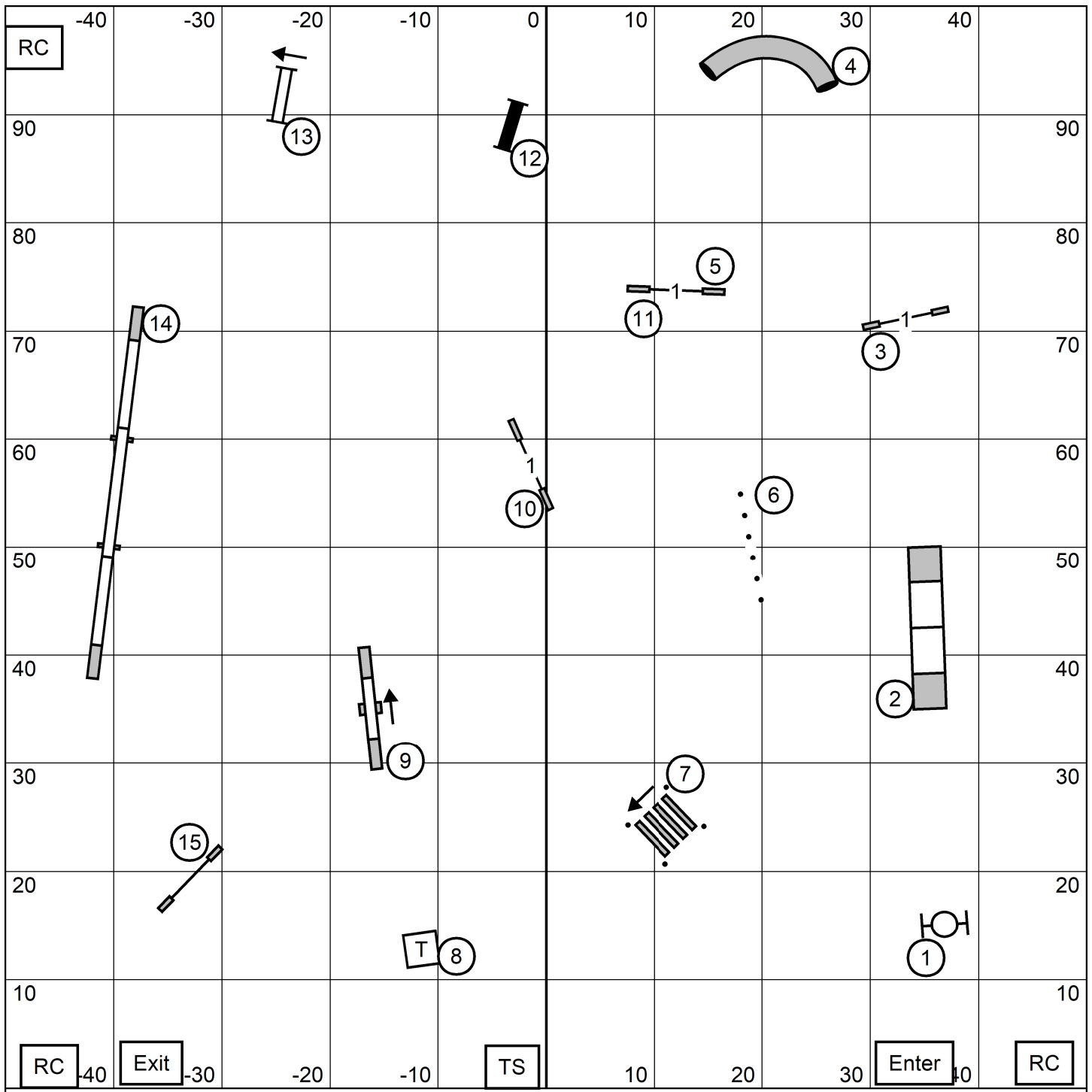


WESTERN MASSACHUSETTES SHETLAND SHEEPDOG CLUB

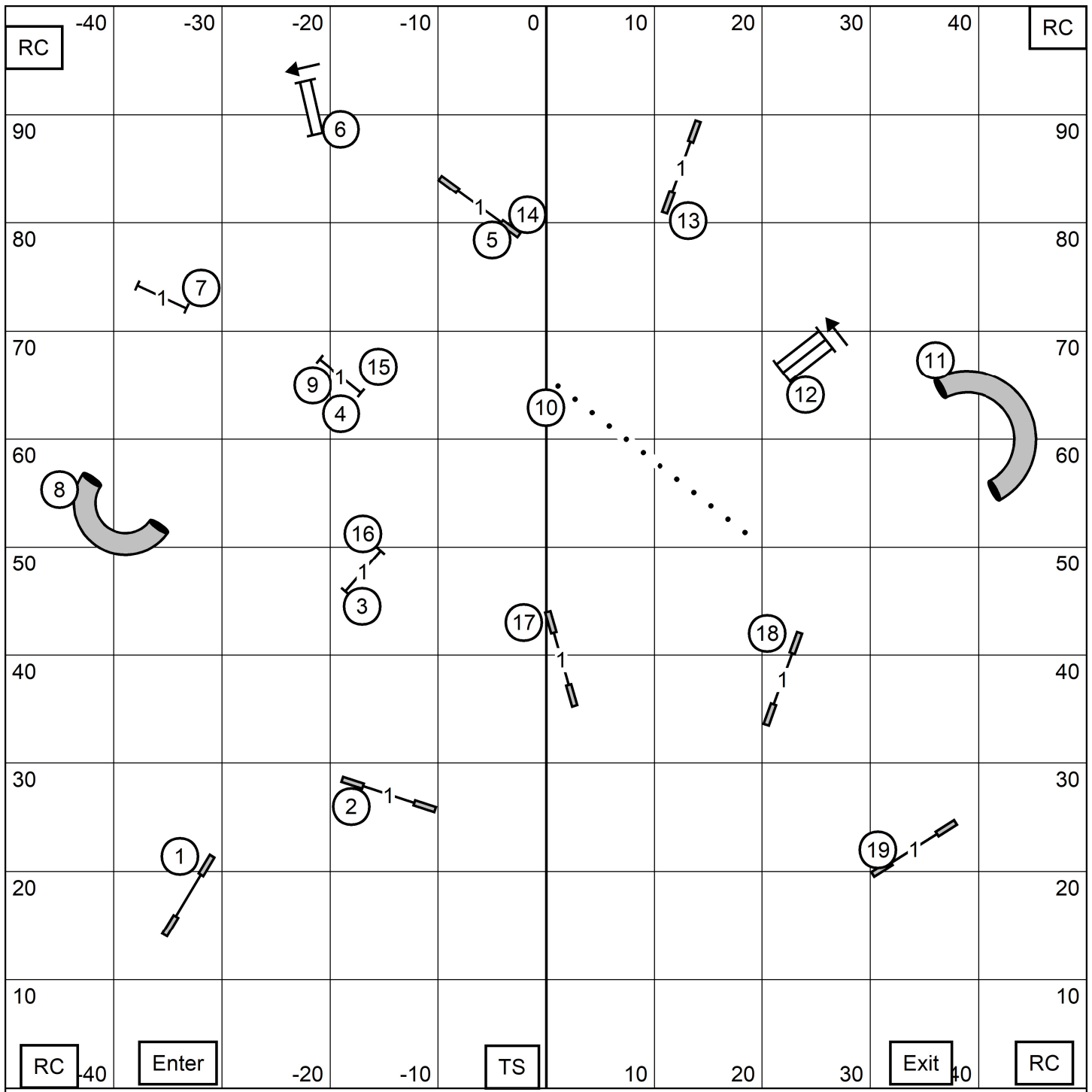
**OPEN JWW**

SATURDAY, OCTOBER 9, 2021

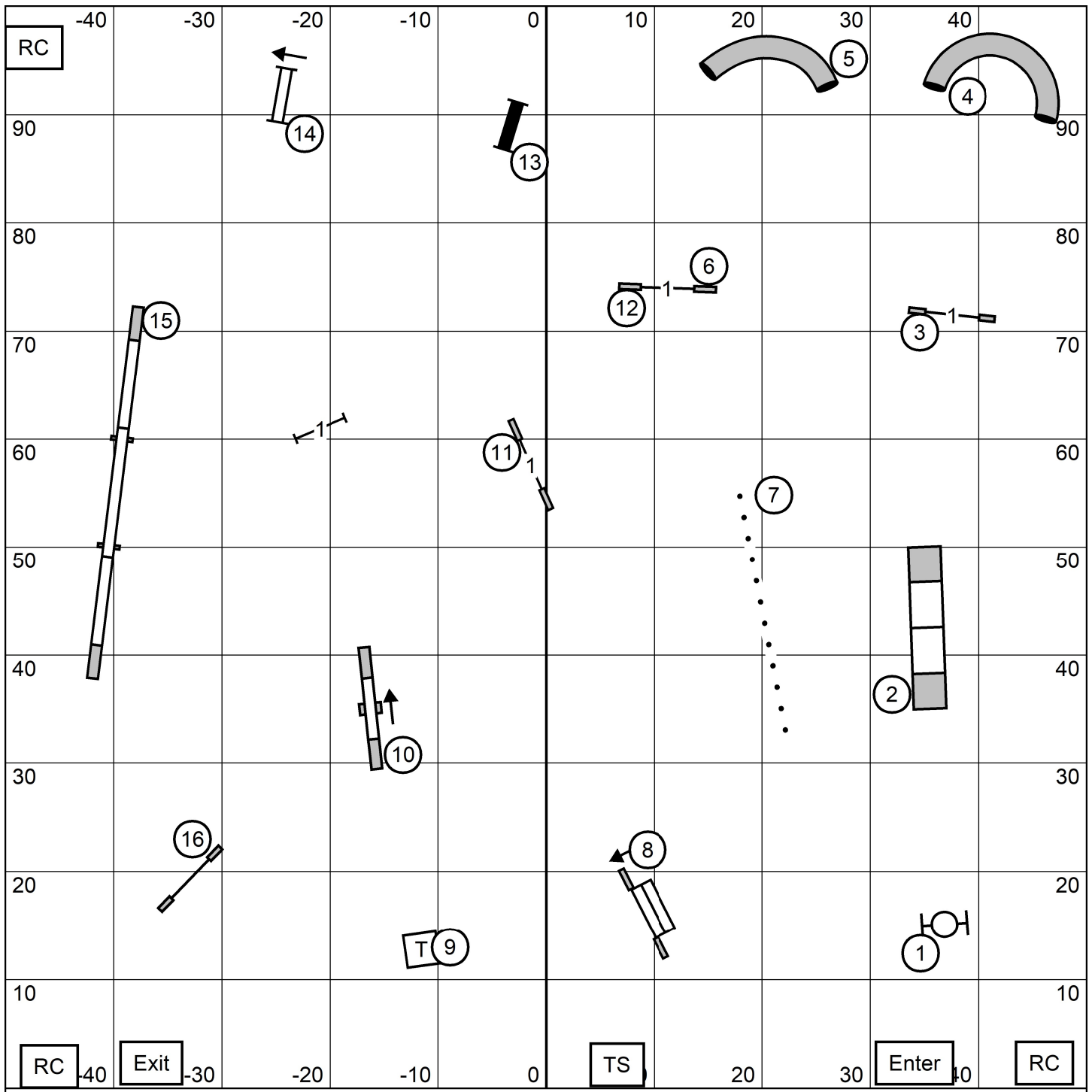
DIANE DUNN FYFE



WESTERN MASSACHUSETTES SHETLAND SHEEPDOG CLUB  
**NOVICE STANDARD**  
 SATURDAY, OCTOBER 9, 2021  
 DIANE DUNN FYFE



WESTERN MASSACHUSETTES SHETLAND SHEPDOG CLUB  
**EXCELLENT MASTER JWW**  
 SATURDAY, OCTOBER 9, 2021  
 DIANE DUNN FYFE

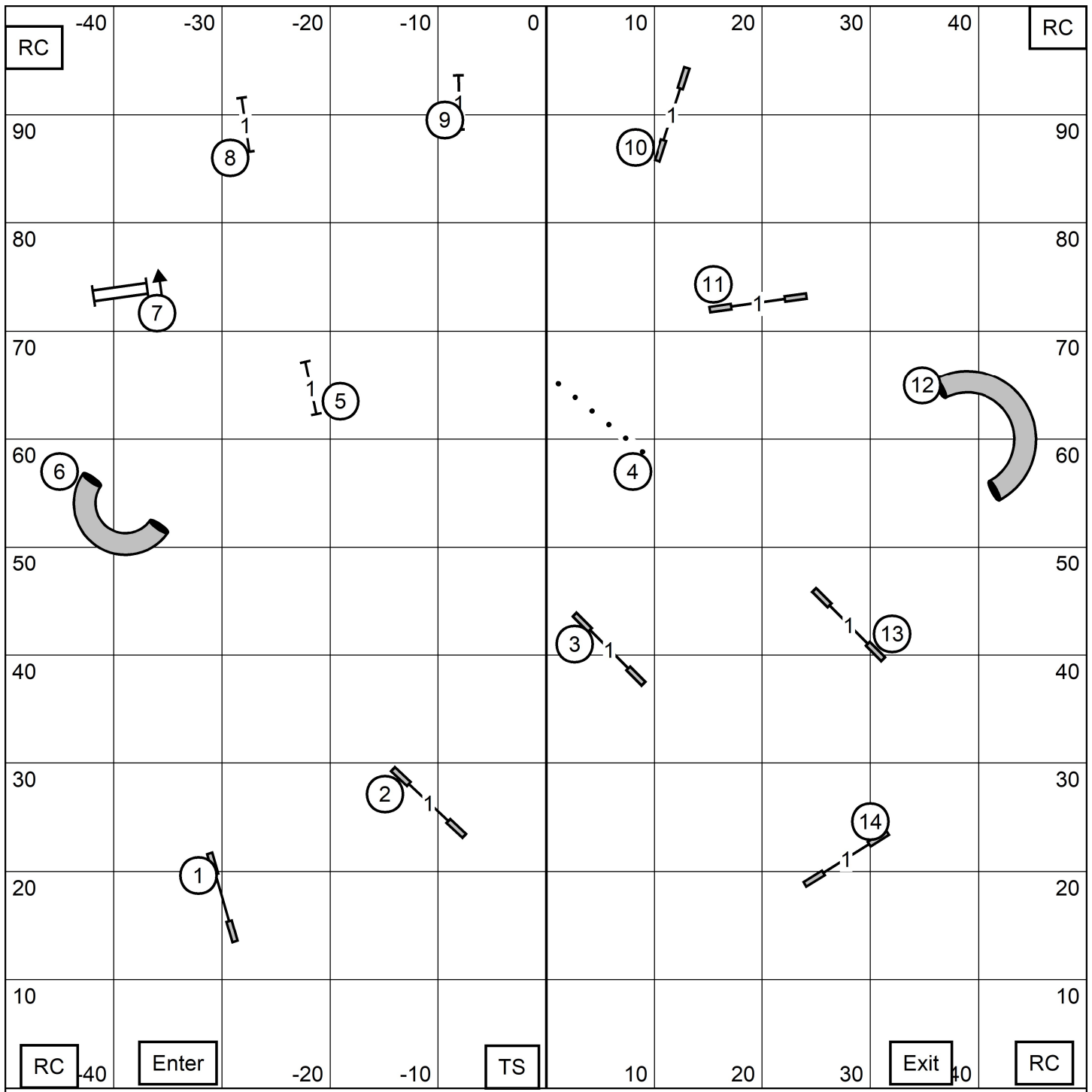


WESTERN MASSACHUSETTES SHETLAND SHEEPDOG CLUB

**OPEN STANDARD**

SATURDAY, OCTOBER 9, 2021

DIANE DUNN FYFE



WESTERN MASSACHUSETTES SHETLAND SHEEPDOG CLUB  
**NOVICE JWW**  
 SATURDAY, OCTOBER 9, 2021  
 DIANE DUNN FYFE

———— Excellent/Master

(5) (8) (2) in flow

Send = 35 pts; need 60 pts.

———— Open

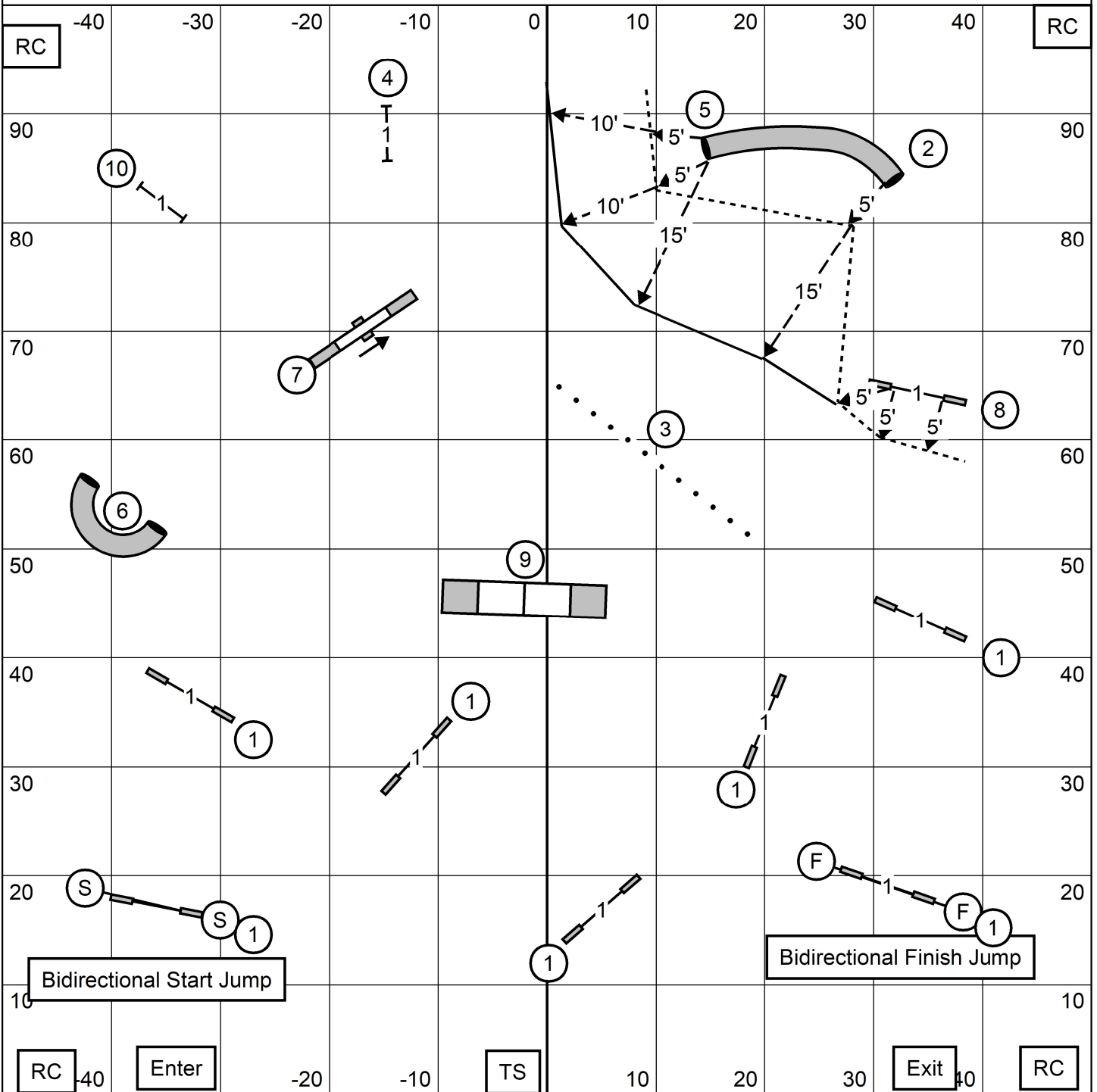
(5) (8) -or- (8) (2) in flow

Send = 30 or 33 pts; need 55 pts

----- Novice

(5) (8) -or- (8) (2) in flow

Send = 30 or 33 pts; need 50 pts



WESTERN MASSACHUSETTES SHETLAND SHEEPDOG CLUB

### EXCELLENT MASTER OPEN NOVICE FAST

SATURDAY, OCTOBER 9, 2021

DIANE DUNN FYFE