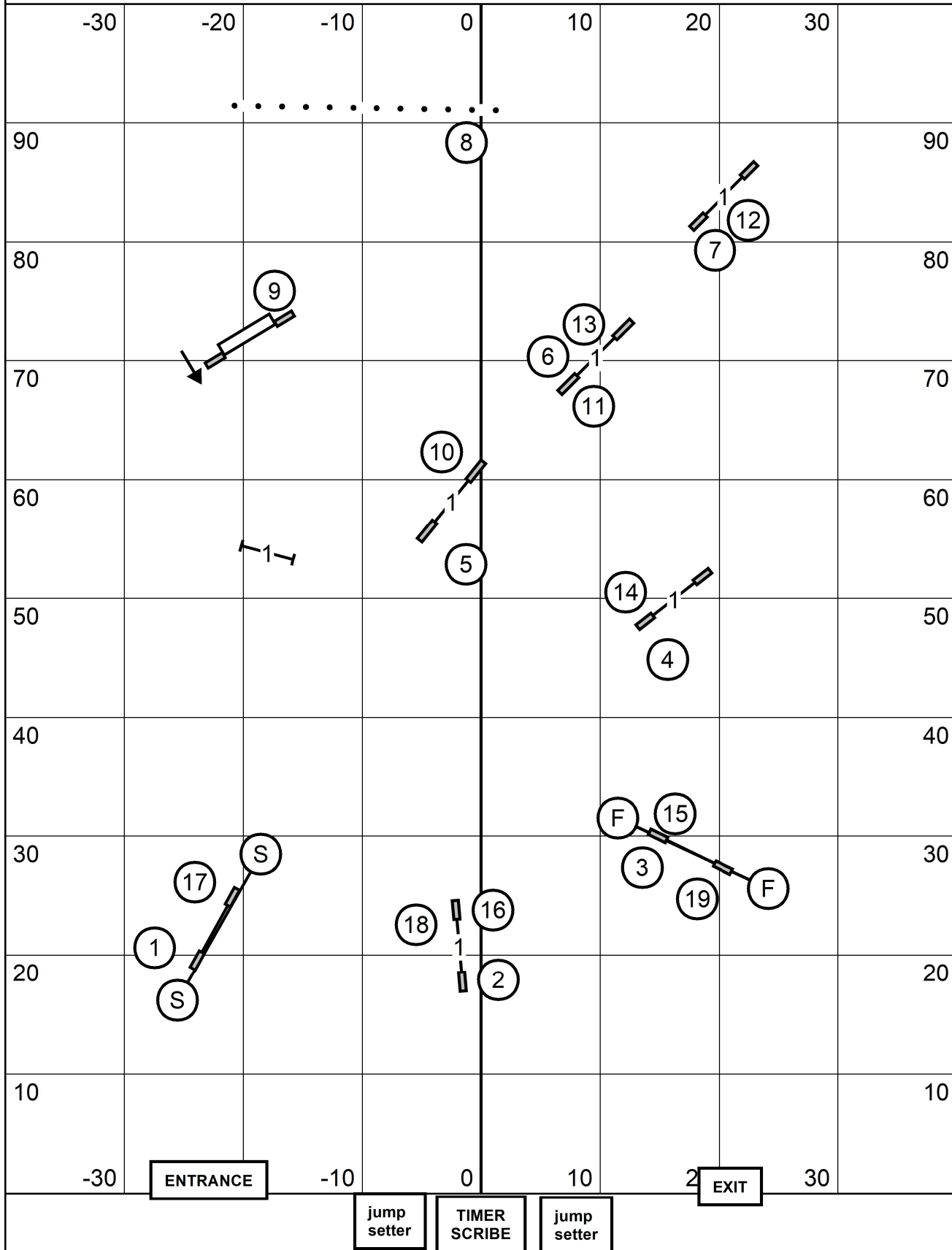


PREMIER JUMPERS WITH WEAVES

Schenectady Dog Training Club

Saturday November 4, 2023 Judge: Mark Upshaw

80 x 100 Indoors / Turf

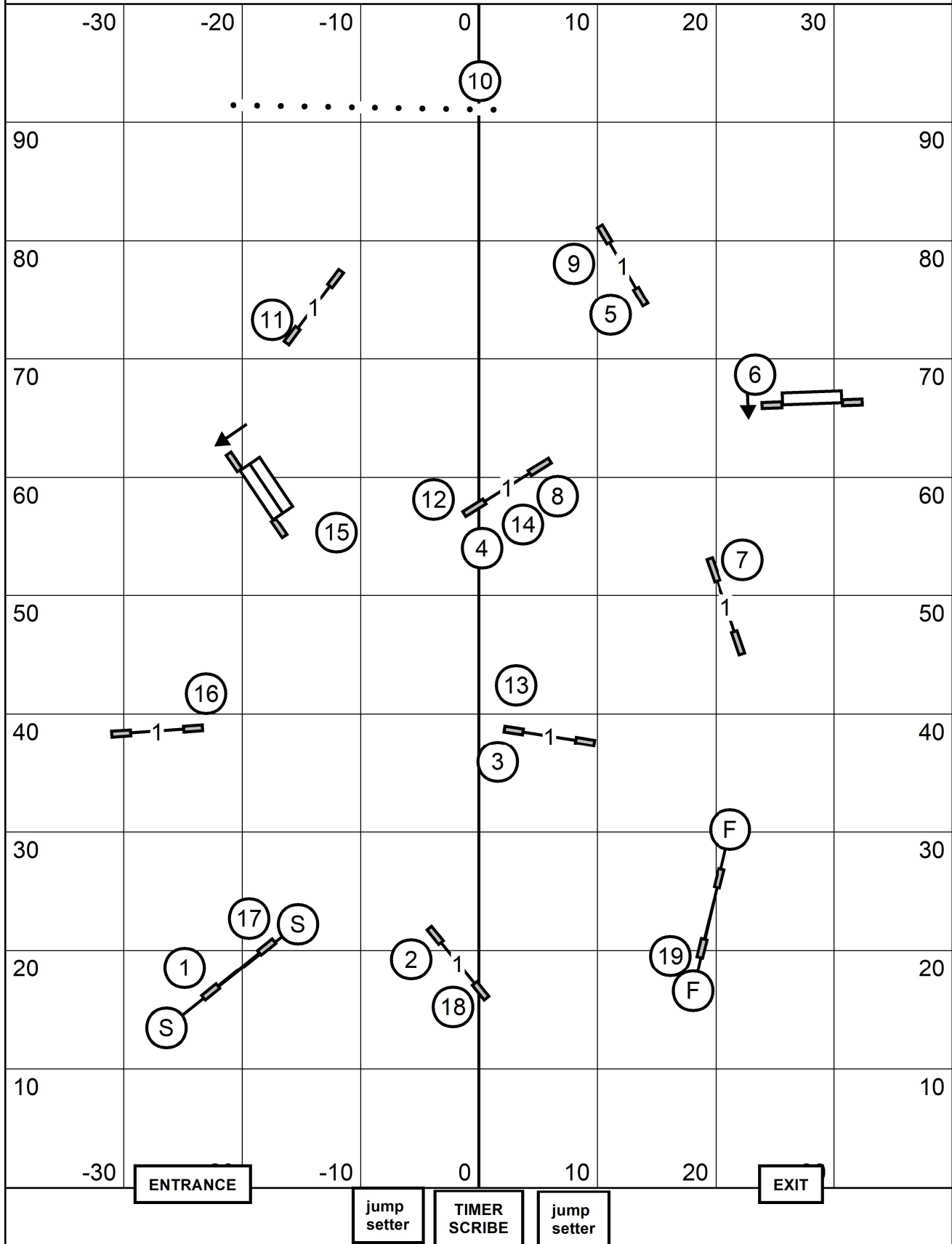


MASTER/EXCELLENT JUMPERS WITH WEAVES

Schenectady Dog Training Club

Saturday November 4, 2023 Judge: Mark Upshaw

80 x 100 Indoors / Turf

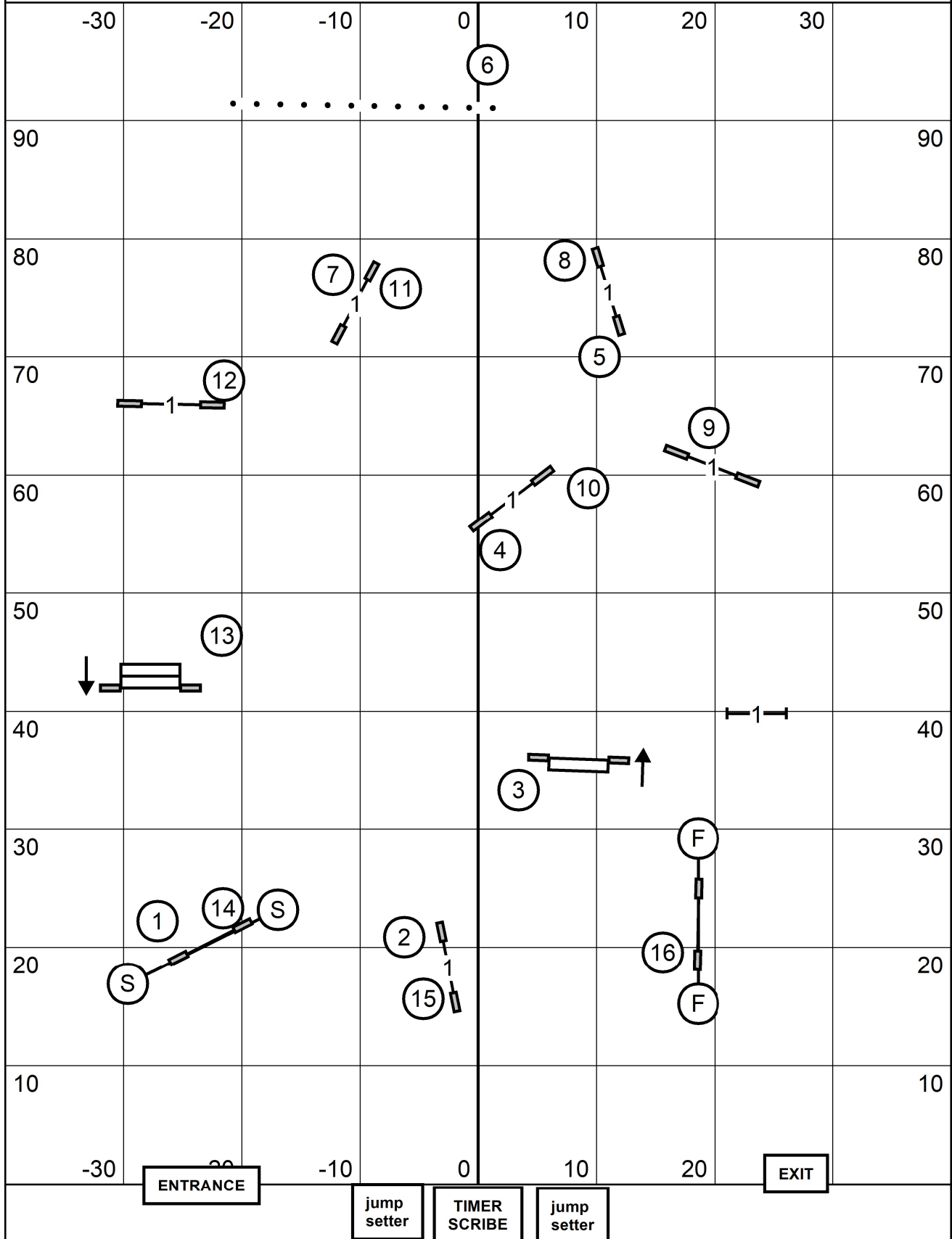


OPEN JUMPERS WITH WEAVES

Schenectady Dog Training Club

Saturday November 4, 2023 Judge: Mark Upshaw

80 x 100 Indoors / Turf

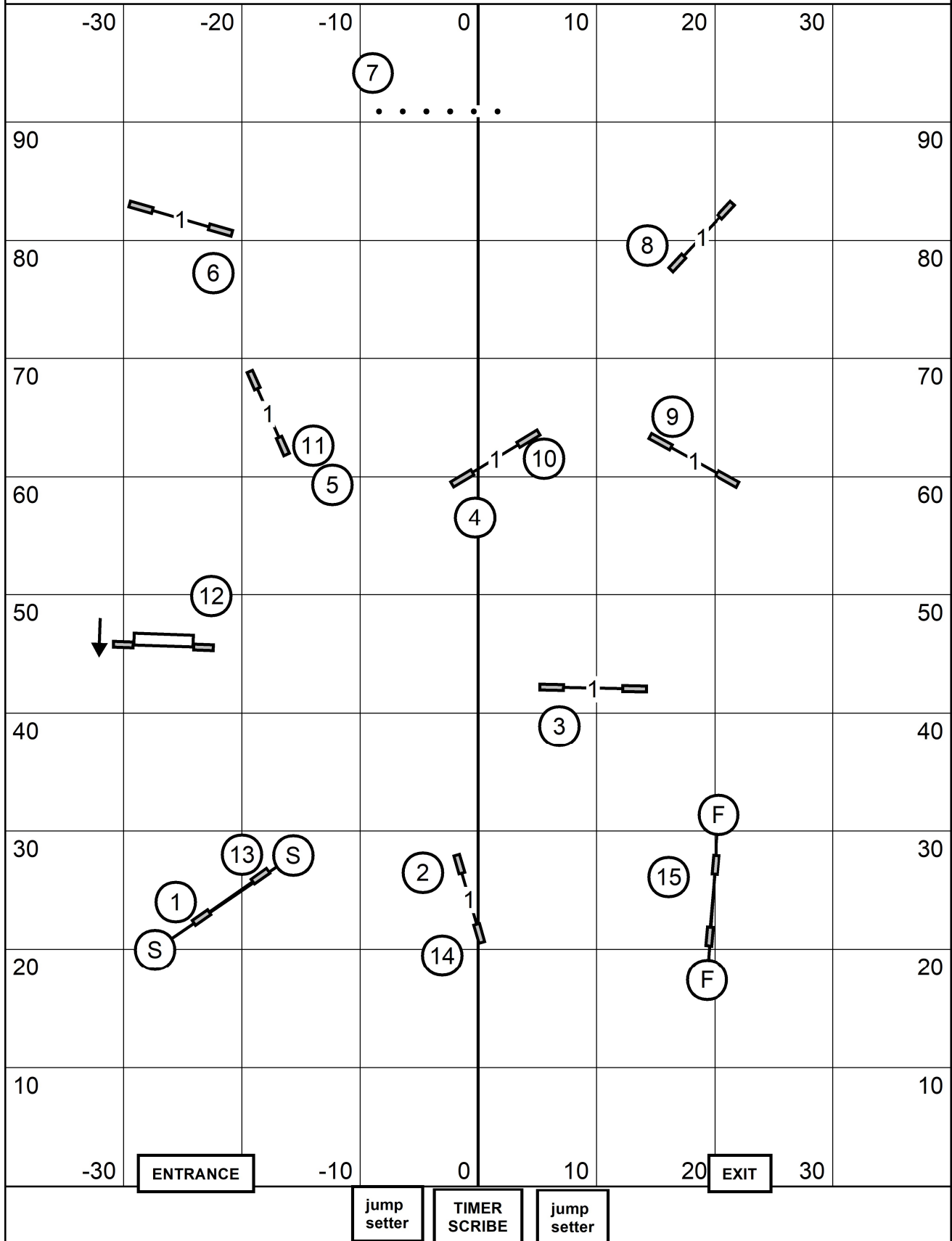


NOVICE JUMPERS WITH WEAVES

Schenectady Dog Training Club

Saturday November 4, 2023 Judge: Mark Upshaw

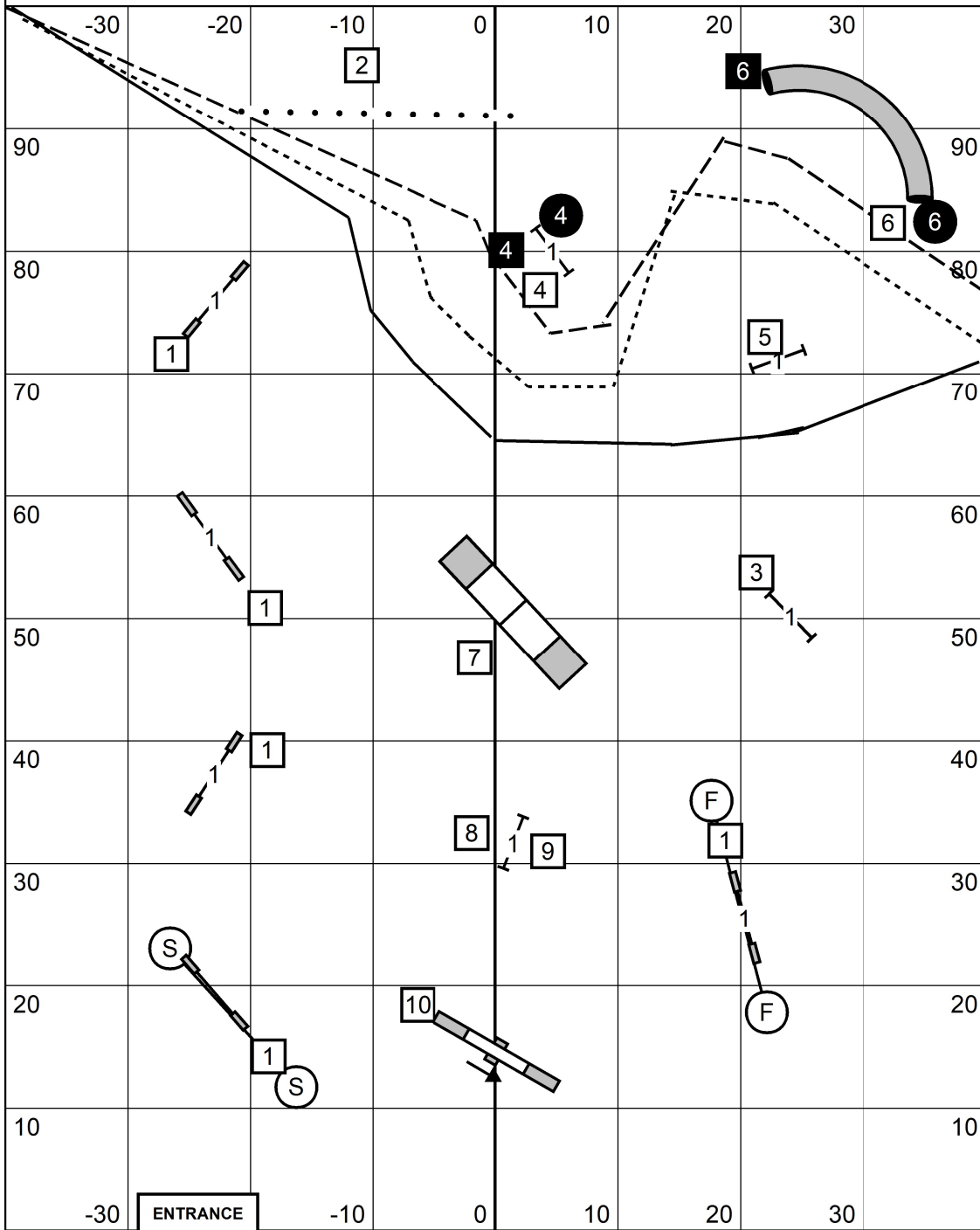
80 x 100 Indoors / Turf



COMBINED FAST

Schenectady Dog Training Club

Saturday November 4, 2023 Judge: Mark Upshaw
80 x 100 Indoors / Turf



<p>OPEN SEND BONUS Tunnel - 6 to Jump - 4 or (dark circle numbers, dotted line) Jump - 4 to Tunnel - 6 (dark square numbers, dotted line)</p>	<p>jump setter</p> <p>TIMER SCRIBE</p> <p>jump setter</p> <p>Jump - 5 is bidirectional for Open and Novice</p>	<p>NOVICE SEND BONUS Tunnel - 6 to Jump - 4 or (dark circle numbers, dashed line) Jump - 4 to Tunnel - 6 (dark square numbers, dashed line)</p>
--	---	--

MASTER/EXCELLENT SEND BONUS
Jump- 4 to Jump - 5 to Tunnel - 6
(light numbers, solid line)

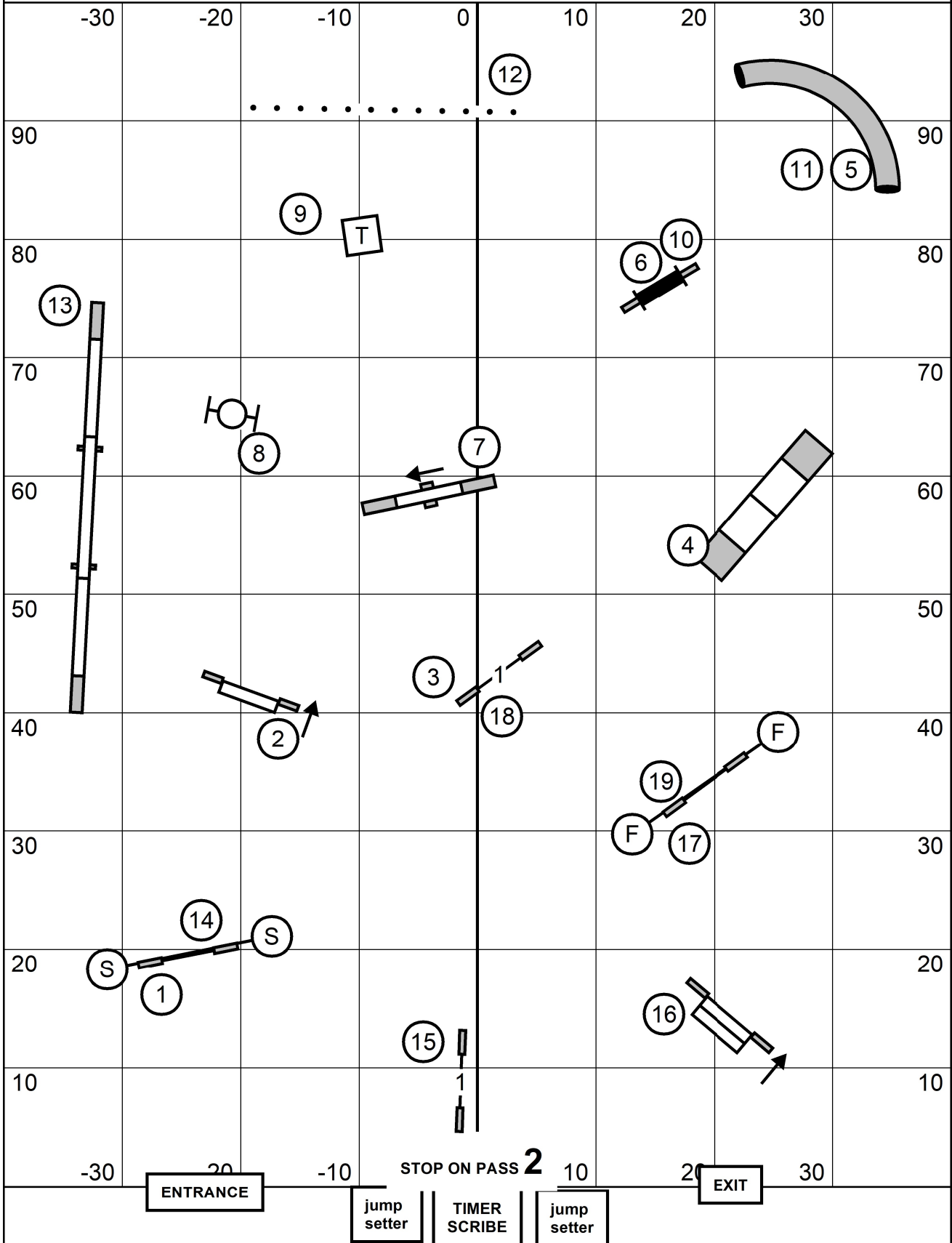
All Obstacles Are Bidirectional Except:
Teeter - 10, Dual Pointed Jump 8.9
and Send Obstacles - 4,5,6

MASTER/EXCELLENT STANDARD

Schenectady Dog Training Club

Saturday November 4, 2023 Judge: Mark Upshaw

80 x 100 Indoors / Turf

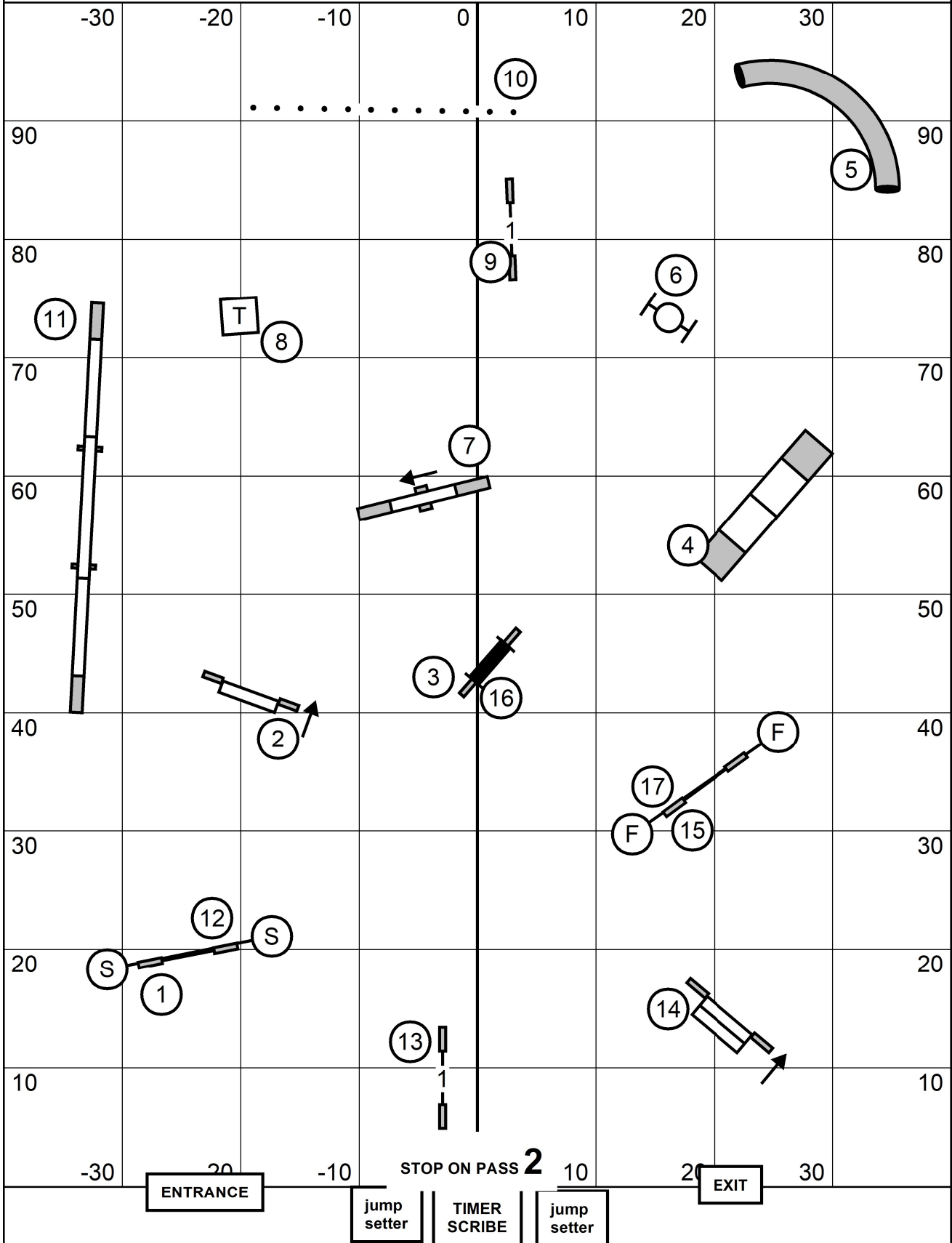


OPEN STANDARD

Schenectady Dog Training Club

Saturday November 4, 2023 Judge: Mark Upshaw

80 x 100 Indoors / Turf



NOVICE STANDARD

Schenectady Dog Training Club

Saturday November 4, 2023 Judge: Mark Upshaw

80 x 100 Indoors / Turf

