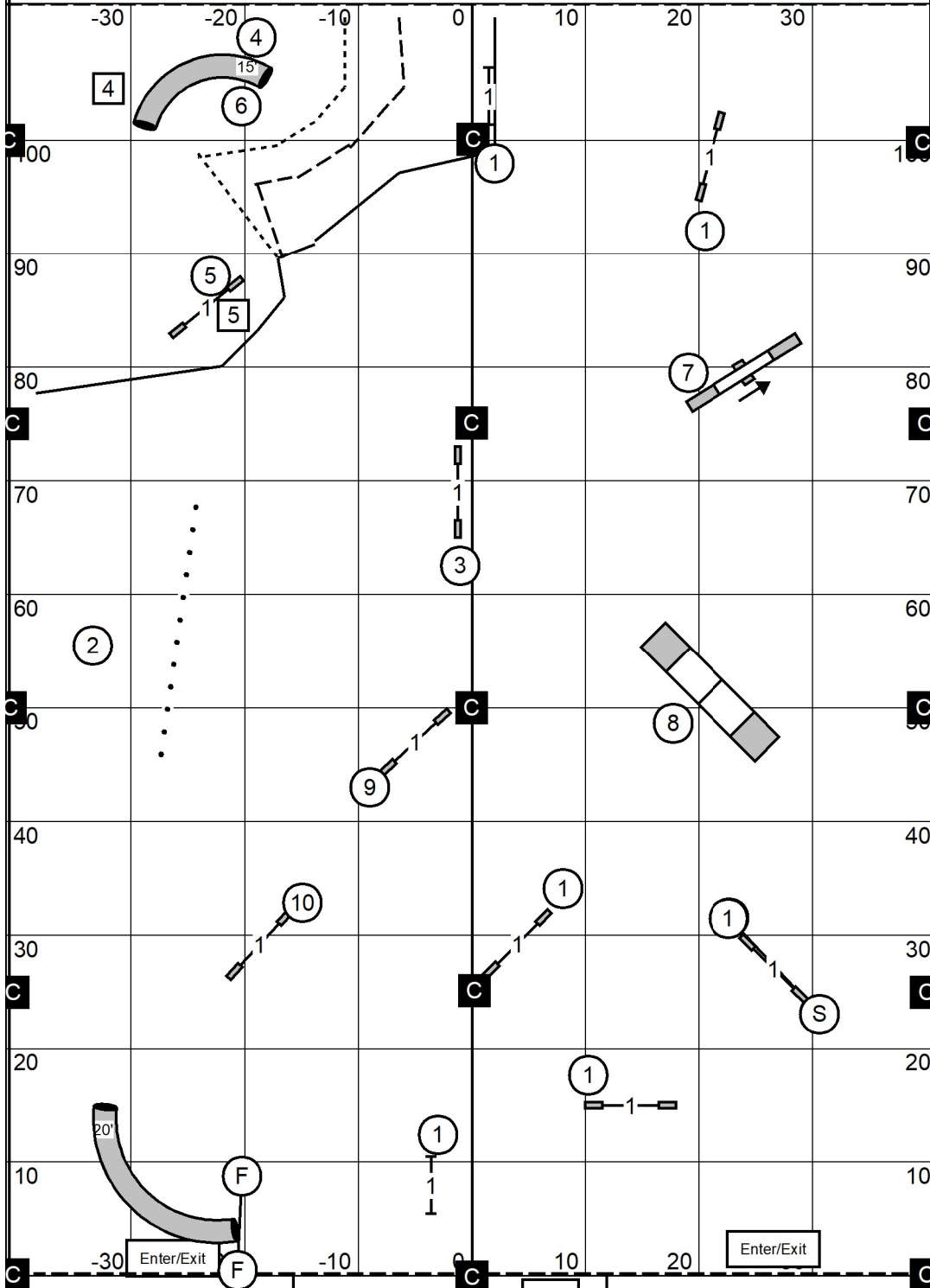


Central NY Shelties Club  
 Syracuse Obedience Training Center  
 Syracuse, New York  
 Saturday, Jan 18th, 2025

**FAST**  
 Indoors on Turf  
 80 x 110 ft  
 Judge: Andrew Mellon



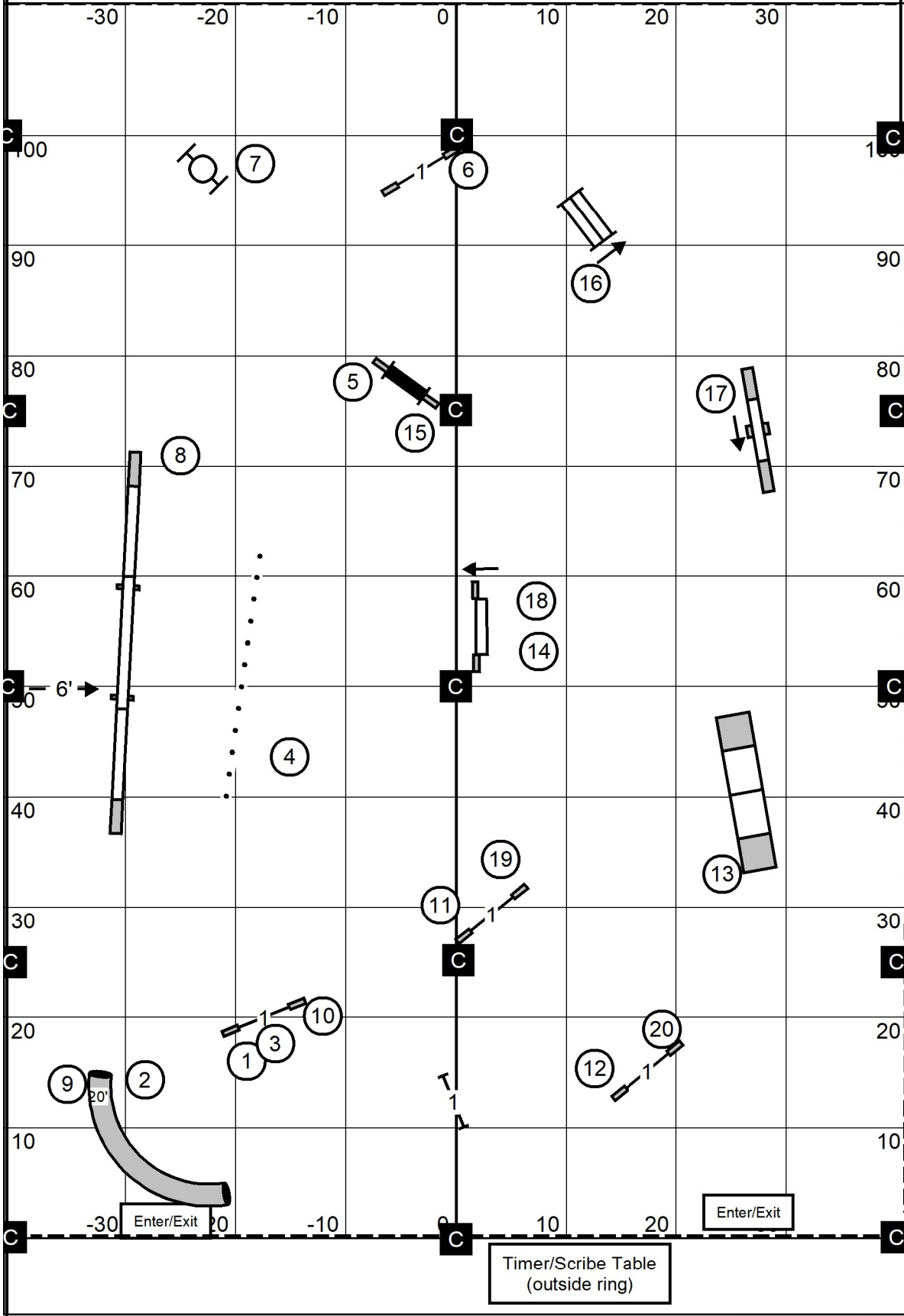
Ex/M (6) (5) (4)  
 60 pts (15+20 = 35)  
 need 25 addit.

Open (6) (5) (4)  
 55 pts. (15+20 = 35)  
 need 20 addit.

Nov (6) (5) or (5) (4)  
 50 pts. need 19 or 21 addit.  
 (11+20 = 31 or 9+20=29)

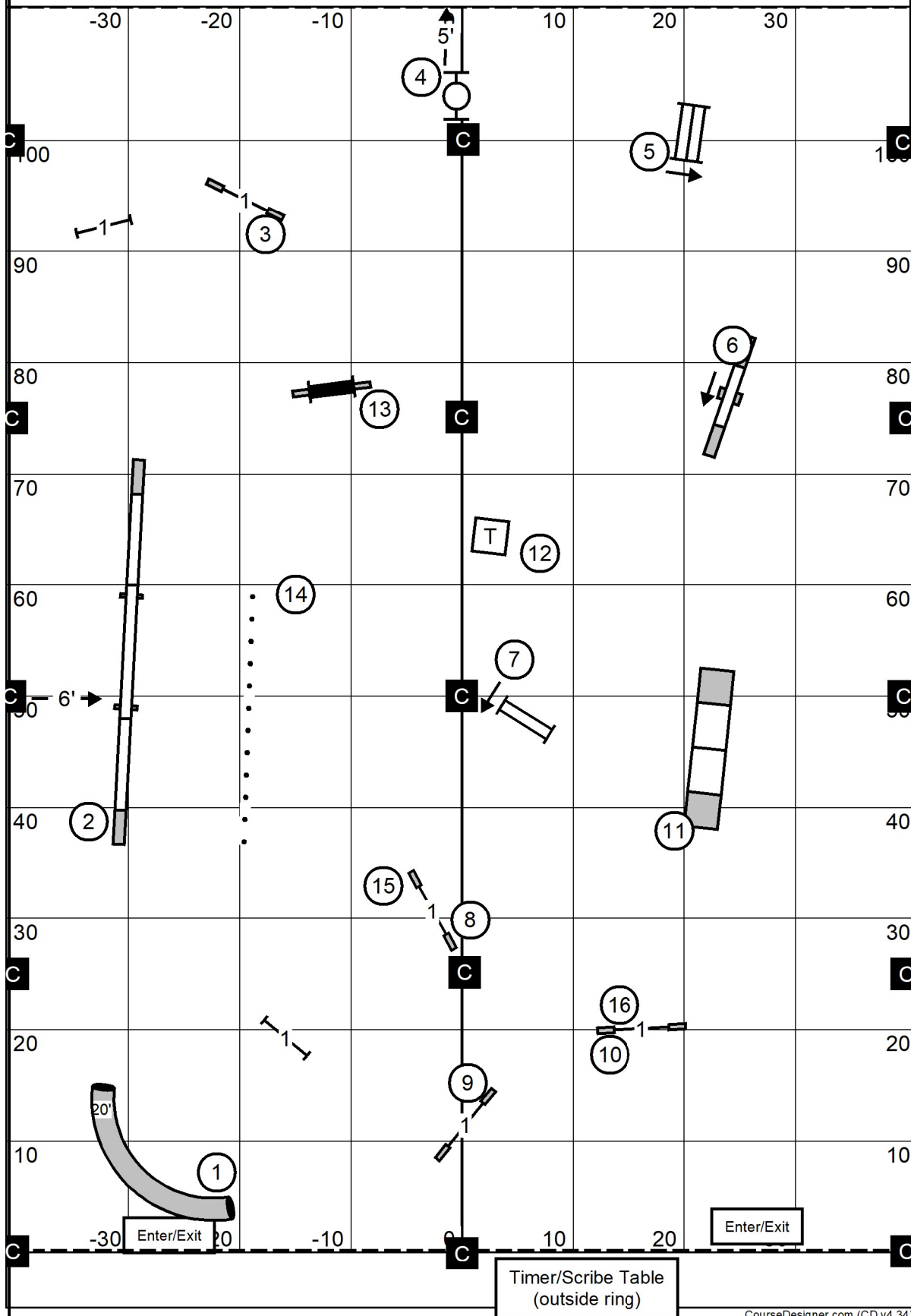
Central NY Shelties Club  
 Syracuse Obedience Training Center  
 Syracuse, New York  
 Saturday, Jan 18th, 2025

**Excellent/Master Std**  
 Indoors on Turf  
 80 x 110 ft  
 Judge: Andrew Mellon



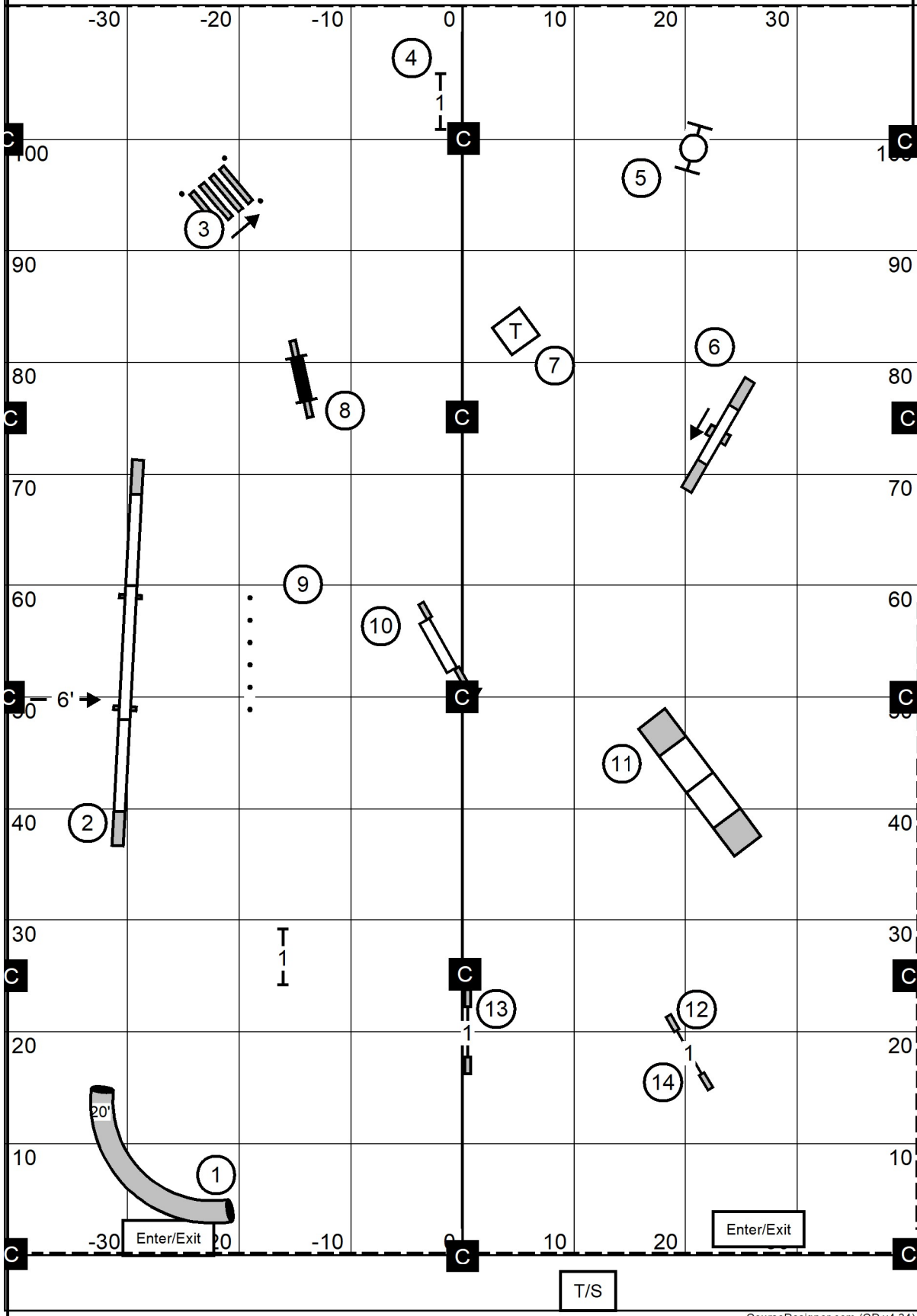
Central NY Shelties Club  
 Syracuse Obedience Training Center  
 Syracuse, New York  
 Saturday, Jan 18th, 2025

**Open Std**  
 Indoors on Turf  
 80 x 110 ft  
 Judge: Andrew Mellon



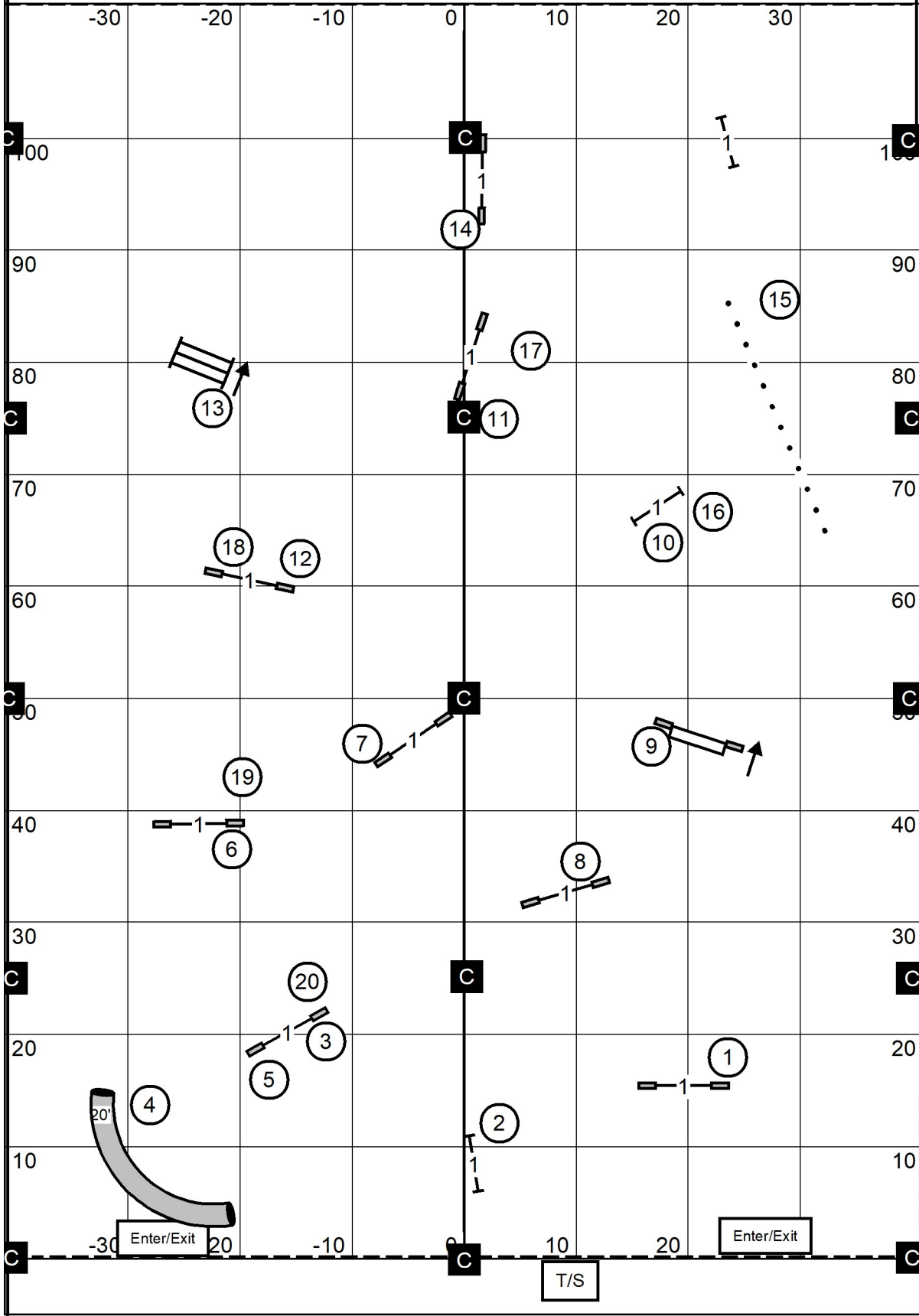
Central NY Shelties Club  
 Syracuse Obedience Training Center  
 Syracuse, New York  
 Saturday, Jan 18th, 2025

**Novice Std**  
 Indoors on Turf  
 80 x 110 ft  
 Judge: Andrew Mellon



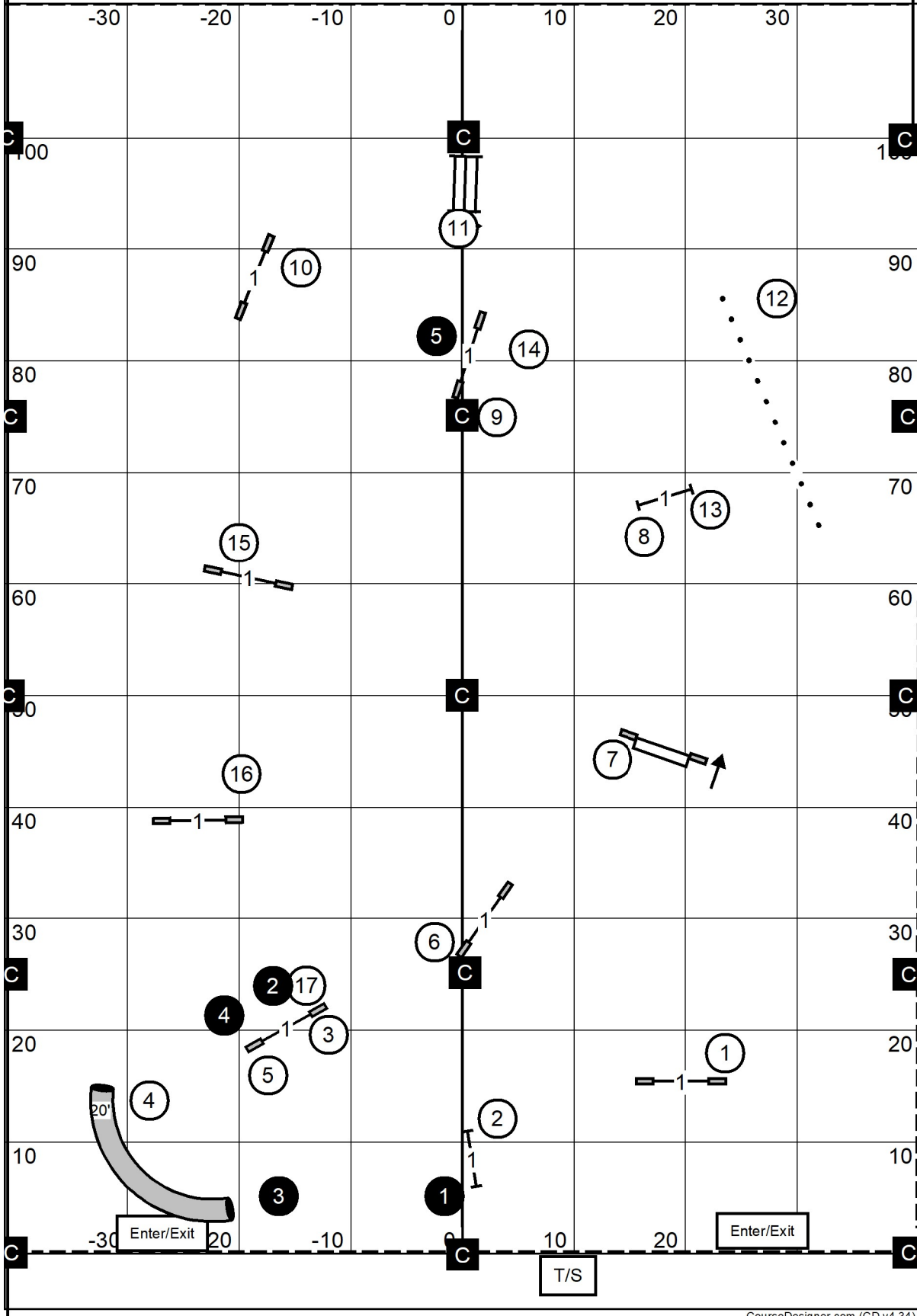
Central NY Shelties Club  
Syracuse Obedience Training Center  
Syracuse, New York  
Saturday, Jan 18th, 2025

**Excellent/Master JWW**  
Indoors on Turf  
80 x 110 ft  
Judge: Andrew Mellon



Central NY Shelties Club  
Syracuse Obedience Training Center  
Syracuse, New York  
Saturday, Jan 18th, 2025

**Open JWW**  
Indoors on Turf  
80 x 110 ft  
Judge: Andrew Mellon



Central NY Shelties Club  
 Syracuse Obedience Training Center  
 Syracuse, New York  
 Saturday, Jan 18th, 2025

**Novice JWW**  
 Indoors on Turf  
 80 x 110 ft  
 Judge: Andrew Mellon

